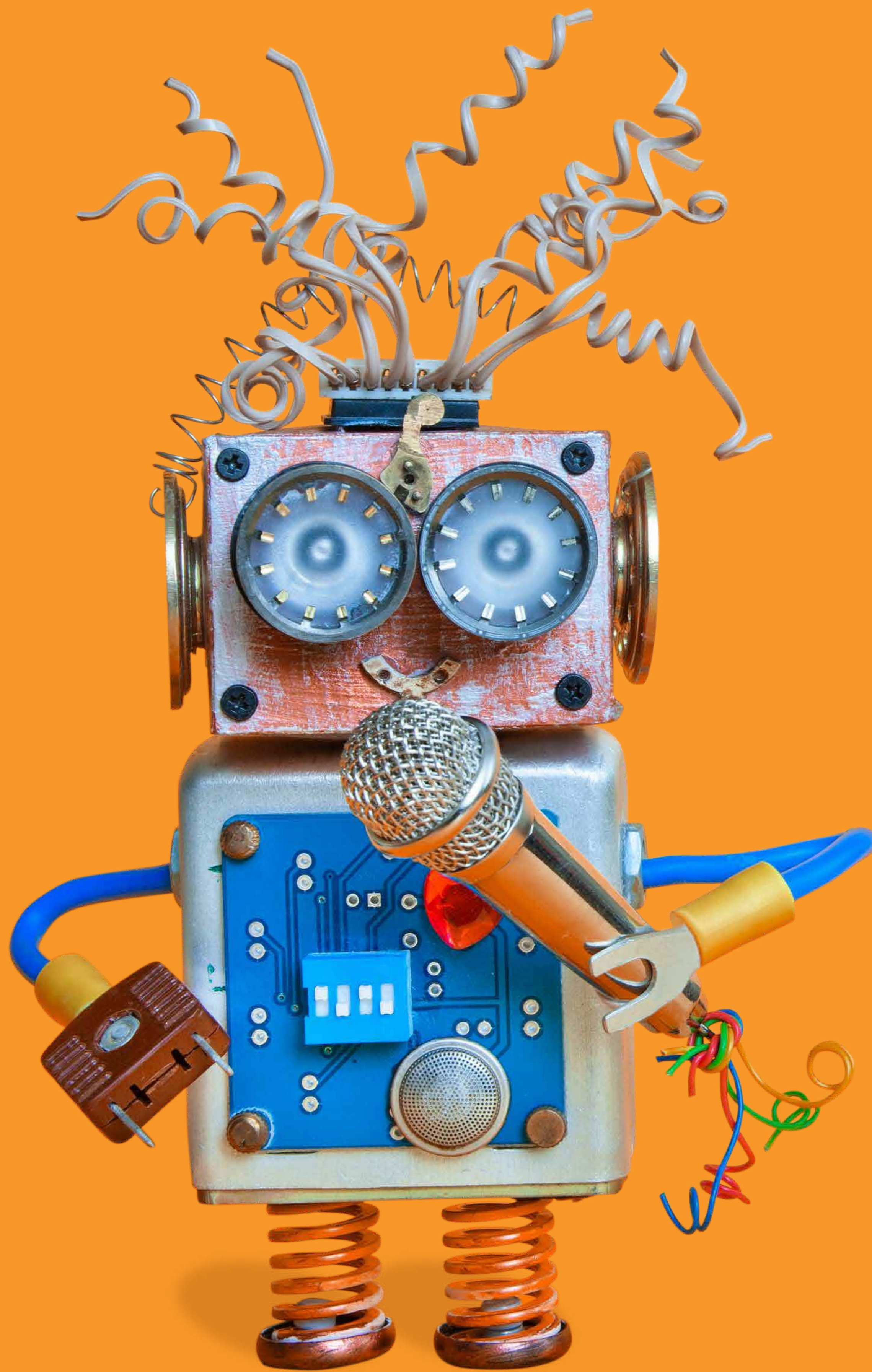


He aha rā te īpara?



- He whānui ngā hautaonga ka taka ki raro i te īpara, koia ko ngā pūrere ka whaingaihia ki te pūhiko rāroto, ka whāngaihia rānei mā te taura hiko.
- Ko ngā momo pūrere tāhiko katoa kua kore e whaitake ana, kua kore e hiahiatia ana.
- Mēnā kua tō te rā ki ēnei momo pūrere nei, kua kore e hiahiatia, ka kīia he īpara. Hei tauira: ko te rorohiko kawekawe, ko te rorohiko papamahi, ko te pūrere tā, ko te papapātuhi, ko te kiore, ko te kāmera.

***He aha rā ētahi
atu momo īpara?***